











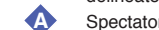



LEGEND

-  Marathon & Half Marathon course
-  5K course
-  Mayor's Walk course
-  Mile marker
-  Medical aid
-  Traffic cone
-  Flashing traffic lights
-  Volunteer
-  Portable restrooms
-  Vehicle traffic
-  Barricade
-  Caution tape/delineator
-  Spectator parking
-  Water

North arrow pointing up, labeled 'N'. Below it, text reads 'Not to Scale'.

**MAGIC MOUNTAIN PKWY
CLOSED TO TRAFFIC AT TOURNEY RD**
— RUNNERS CROSSING —
EXPECT DELAYS
7:00 AM - 7:30 AM

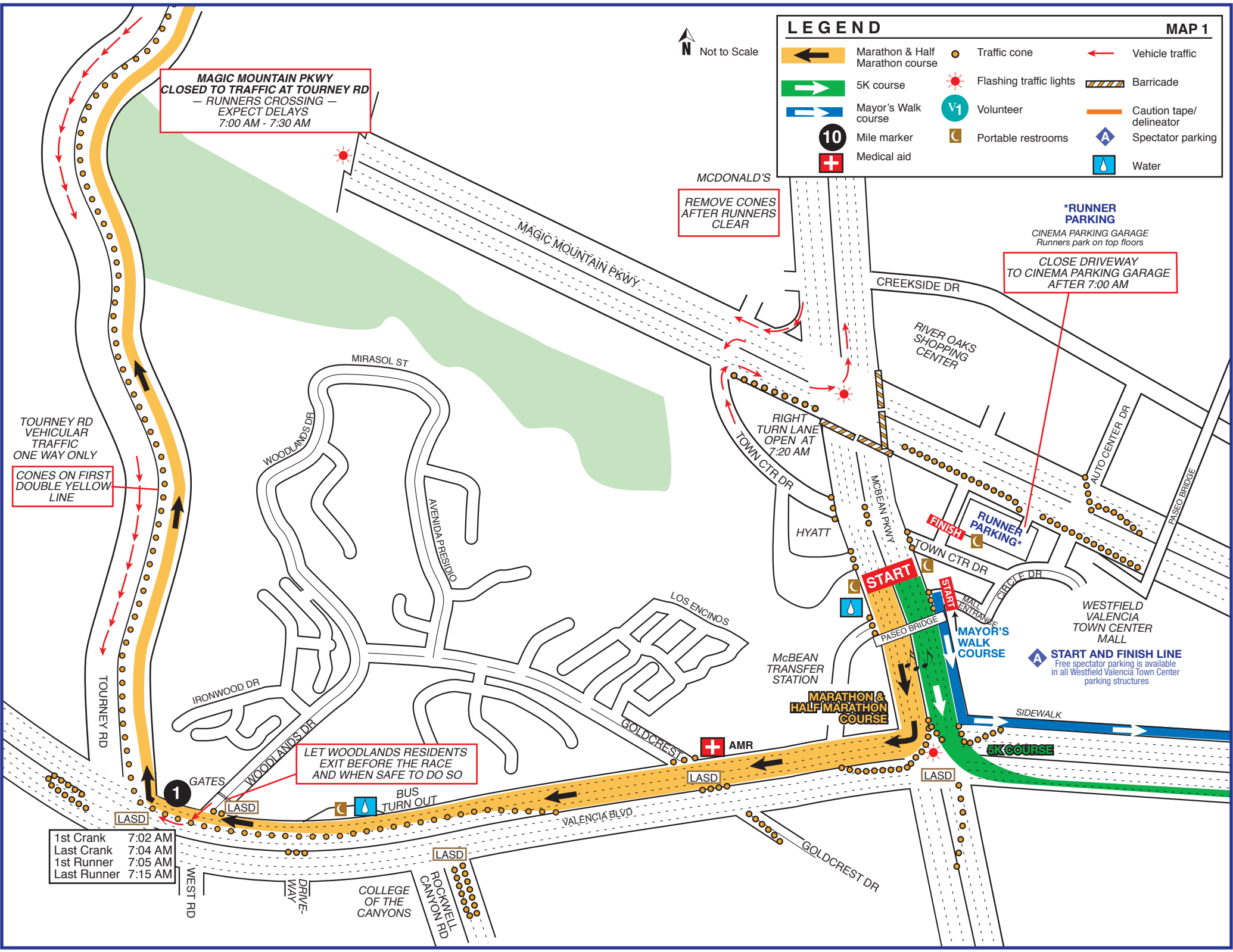
MCDONALD'S
**REMOVE CONES
AFTER RUNNERS
CLEAR**

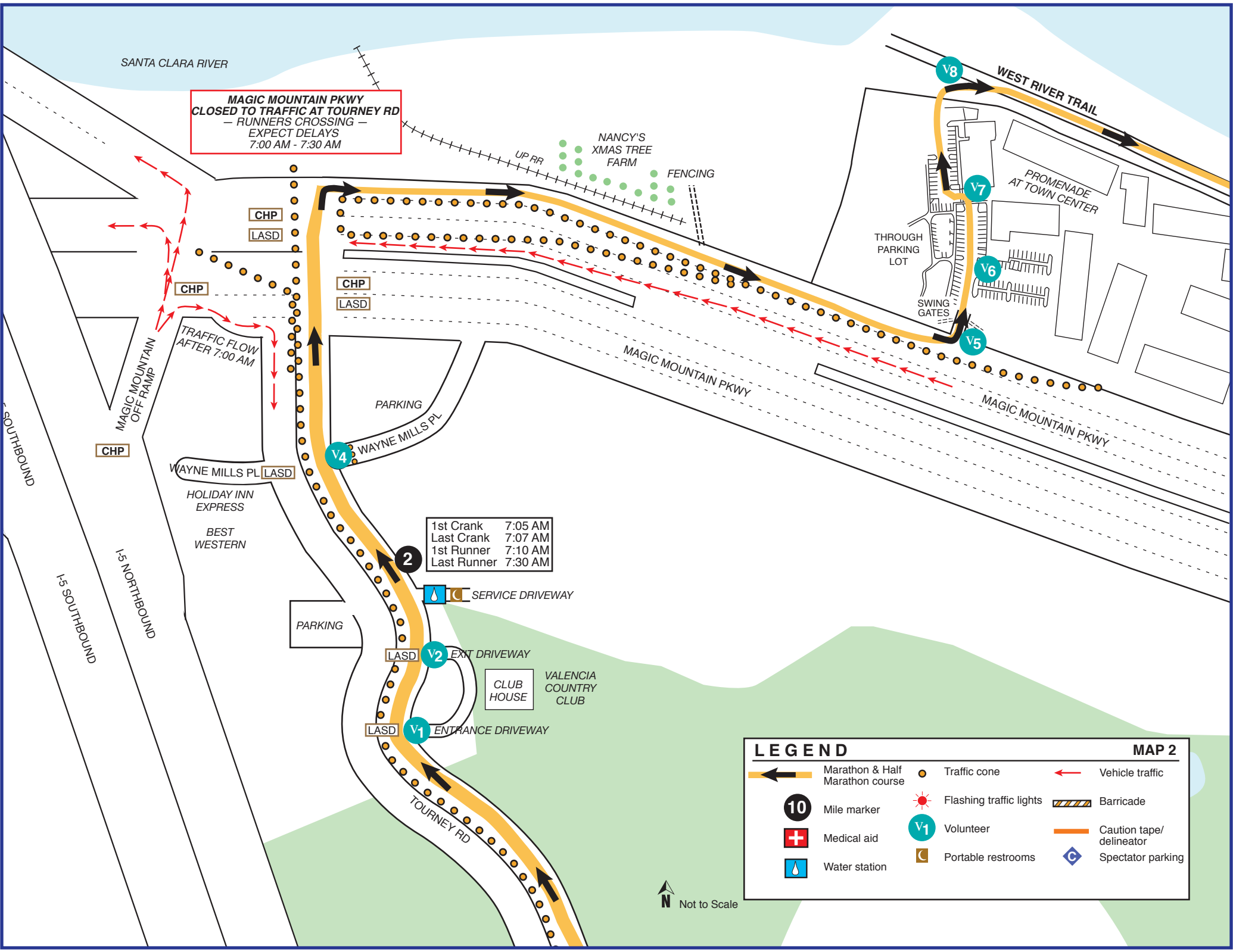
***RUNNER
PARKING**
CINEMA PARKING GARAGE
Runners park on top floors
**CLOSE DRIVEWAY
TO CINEMA PARKING GARAGE
AFTER 7:00 AM**

TOURNEY RD
VEHICULAR
TRAFFIC
ONE WAY ONLY
**CONES ON FIRST
DOUBLE YELLOW
LINE**

**LET WOODLANDS RESIDENTS
EXIT BEFORE THE RACE
AND WHEN SAFE TO DO SO**

1st Crank 7:02 AM
Last Crank 7:04 AM
1st Runner 7:05 AM
Last Runner 7:15 AM





**MAGIC MOUNTAIN PKWY
CLOSED TO TRAFFIC AT TOURNEY RD**
— RUNNERS CROSSING —
EXPECT DELAYS
7:00 AM - 7:30 AM

1st Crank 7:05 AM
Last Crank 7:07 AM
1st Runner 7:10 AM
Last Runner 7:30 AM

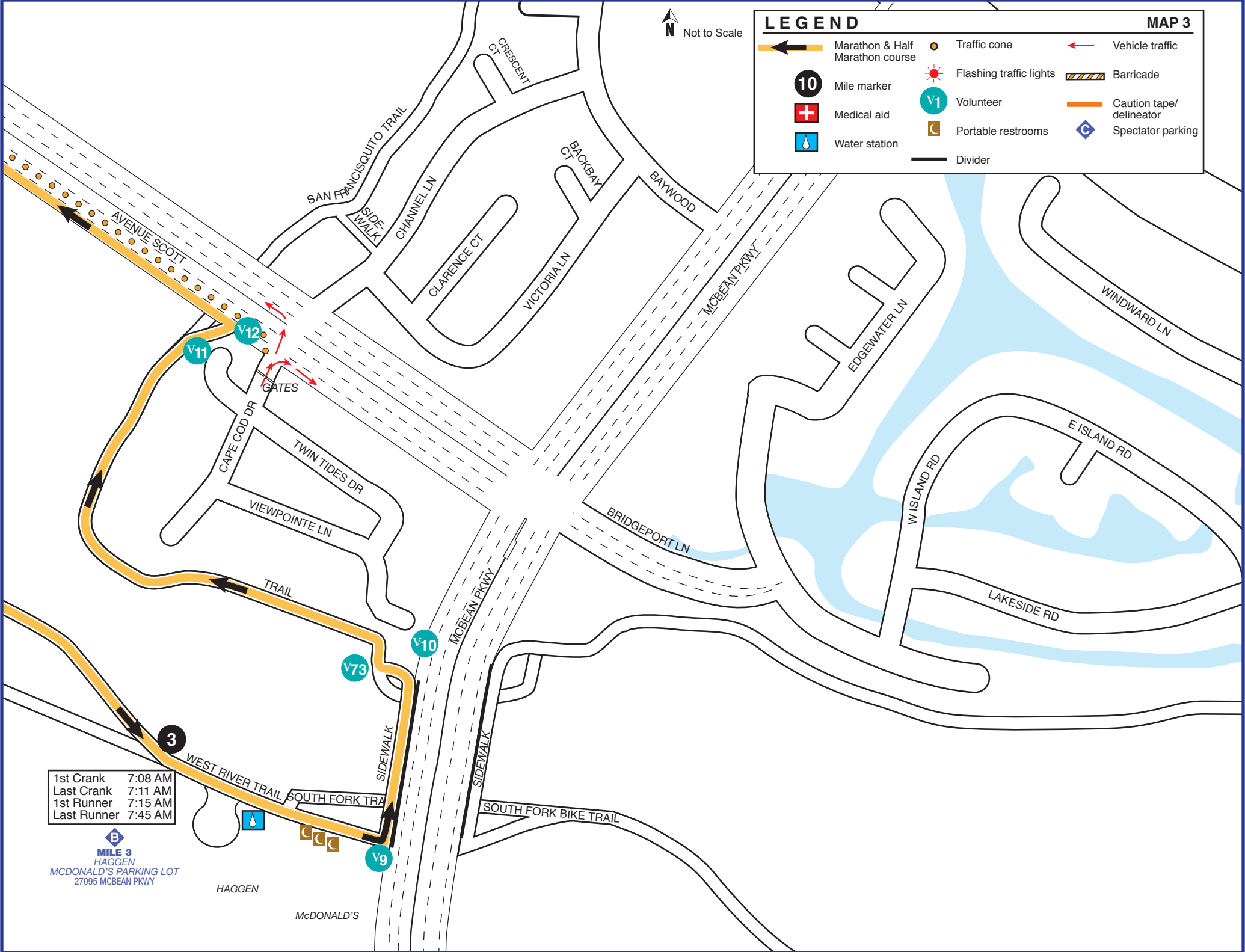
LEGEND		MAP 2	
	Marathon & Half Marathon course		Vehicle traffic
	Mile marker		Flashing traffic lights
	Medical aid		Volunteer
	Water station		Portable restrooms
			Barricade
			Caution tape/delineator
			Spectator parking

Not to Scale

LEGEND

N Not to Scale

- Marathon & Half Marathon course
- Traffic cone
- Vehicle traffic
- Mile marker
- Flashing traffic lights
- Barricade
- Medical aid
- Volunteer
- Caution tape/delineator
- Water station
- Portable restrooms
- Spectator parking
- Divider

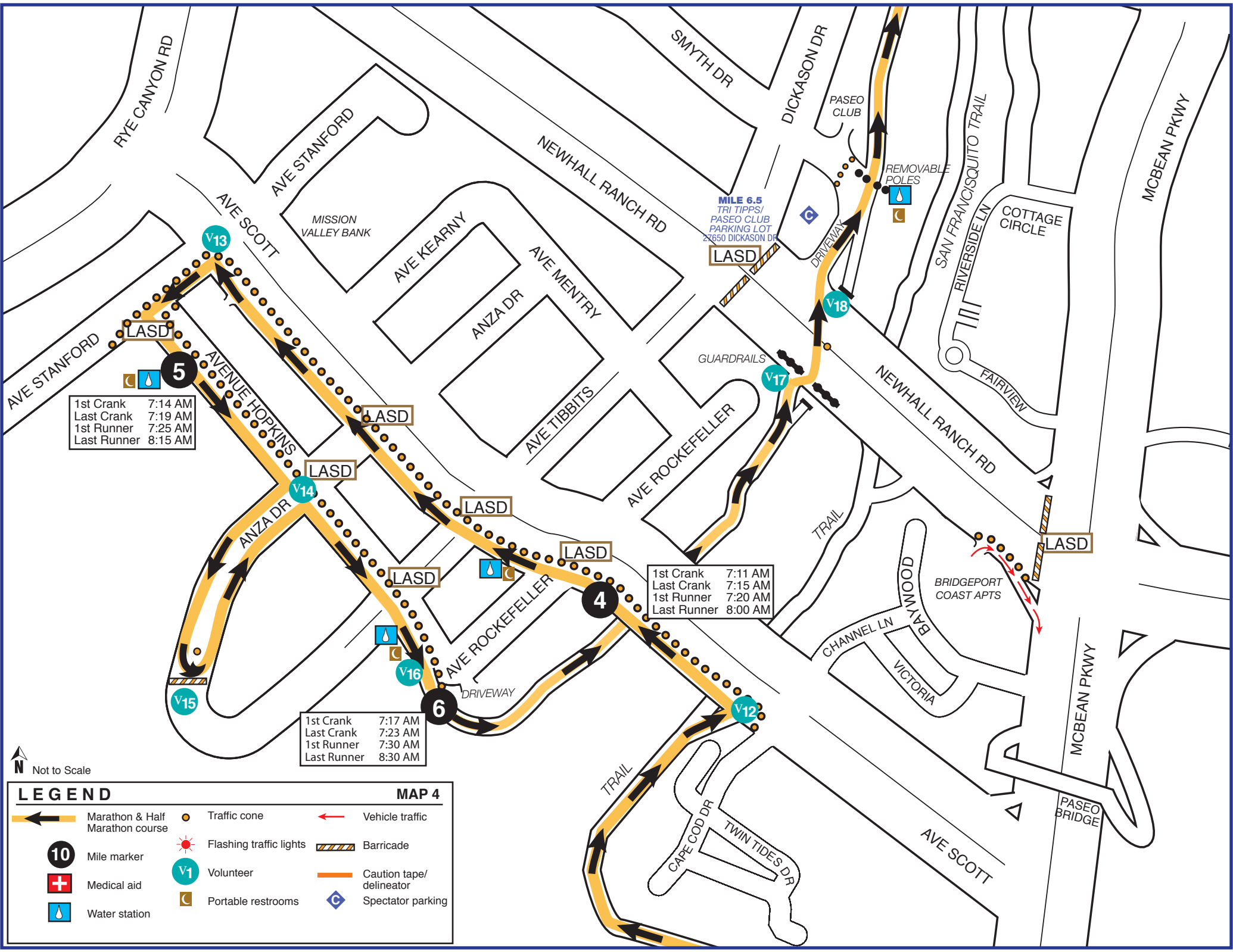


1st Crank 7:08 AM
 Last Crank 7:11 AM
 1st Runner 7:15 AM
 Last Runner 7:45 AM

B
MILE 3
 HAGGEN
 McDONALD'S PARKING LOT
 27095 McBEAN PKWY

HAGGEN

McDONALD'S



1st Crank 7:14 AM
 Last Crank 7:19 AM
 1st Runner 7:25 AM
 Last Runner 8:15 AM

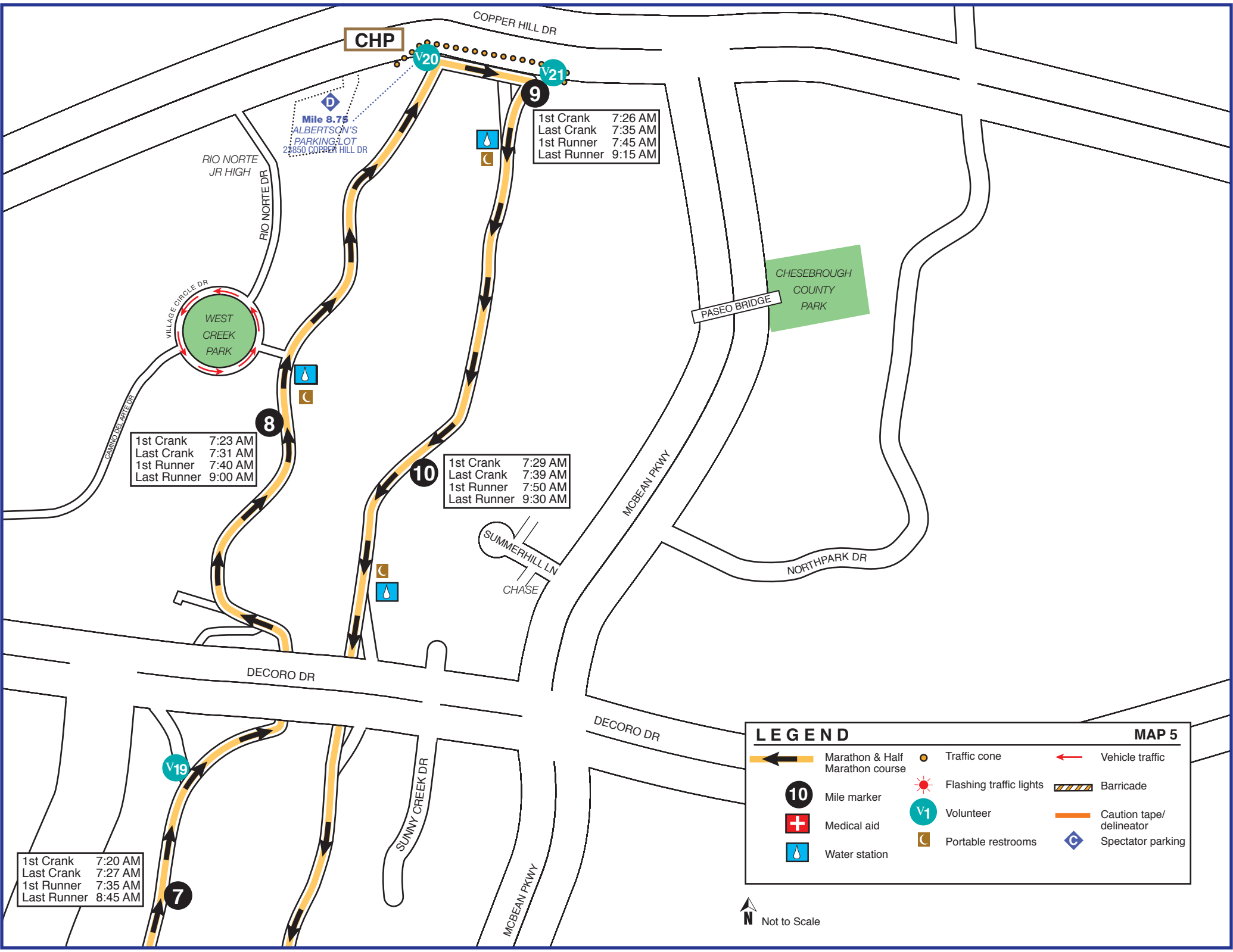
1st Crank 7:11 AM
 Last Crank 7:15 AM
 1st Runner 7:20 AM
 Last Runner 8:00 AM

1st Crank 7:17 AM
 Last Crank 7:23 AM
 1st Runner 7:30 AM
 Last Runner 8:30 AM

N
 Not to Scale

LEGEND **MAP 4**

	Marathon & Half Marathon course		Traffic cone		Vehicle traffic
	Mile marker		Flashing traffic lights		Barricade
	Medical aid		Volunteer		Caution tape/delineator
	Water station		Portable restrooms		Spectator parking



LEGEND **MAP 5**

	Marathon & Half Marathon course		Traffic cone		Vehicle traffic
	Mile marker		Flashing traffic lights		Barricade
	Medical aid		Volunteer		Caution tape/delineator
	Water station		Portable restrooms		Spectator parking

Not to Scale

1st Crank 7:32 AM
 Last Crank 7:43 AM
 1st Runner 7:55 AM
 Last Runner 9:45 AM

MILE 11 *
 HERITAGE PARK
 24155 NEWHALL RANCH RD
 Enter off McBean
 to Fairview *

1st Crank 7:35 AM
 Last Crank 7:47 AM
 1st Runner 8:00 AM
 Last Runner 10:00 AM

HALF MARATHON:
 to FINISH
 KEEP TO RIGHT SIDE

MARATHON
 1st TIME
 KEEP TO LEFT SIDE

AVE TIBBITTS

SAN FRANCISQUITO TRAIL
 SIDEWALK
 CHANNEL LN

AVENUE SCOTT

CAPE COD DR
 TWIN TIDES DR
 VIEWPOINTE LN

WEST RIVER TRAIL

NEWHALL RANCH RD

BRIDGEPORT COVE APTS

PANERA BREAD

MCBEAN PKWY

MCBEAN PKWY

BRIDGEPORT LN

SOUTH FORK BIKE TRAIL

FAIRVIEW DR

GRANDVIEW DR

SPRINGHURST PKWY

VALENCIA HERITAGE PARK
 PARKING

N Not to Scale

LEGEND **MAP 6**

	Marathon & Half Marathon course		Traffic cone		Vehicle traffic
	Mile marker		Flashing traffic lights		Barricade
	Medical aid		Volunteer		Caution tape/delineator
	Water station		Portable restrooms		Divider
			Music band		Spectator parking

MILE 12
 HAGGEN
 MCDONALD'S PARKING LOT
 27095 MCBEAN PKWY

HAGGEN

LEGEND		MAP 7
	Full Marathon	Water station
	Half Marathon	Traffic cone
	Mile marker	Portable restroom
	Medical aid	Volunteer
	Spectator parking	Barricade
		Vehicle traffic
		Caution tape/delineator
		Paseo bridge
		Sheriff

N
Not to Scale

1st Crank 7:35 AM
Last Crank 7:47 AM
1st Runner 8:00 AM
Last Runner 10:00 AM

MILE 3 / 2
HAGGEN
MCDONALD'S PARKING LOT
27095 MCBEAN PKWY

SOUTH FORK BIKE TRAIL

FULL & HALF MARATHON SPLIT

HALF MARATHON:
to FINISH
KEEP TO RIGHT SIDE

FULL MARATHON:
1st TIME
KEEP TO LEFT SIDE

1st Crank 7:38 AM
Last Crank 7:51 AM
1st Runner 8:05 AM
Last Runner 10:15 AM

FINISH

13 HALF

13 FULL

START AND FINISH LINE
Free spectator parking is available
in all Westside Valencia Town Center
parking structures

1st Half Marathon Runner 8:05 AM

MILE 13.1
BARNES & NOBLE
PARKING LOT
23630 VALENCIA BLVD

