

LEGEND

- Marathon & Half Marathon course
- 5K course
- Mayor's Walk course
- Mile marker
- Medical aid
- Traffic cone
- Flashing traffic lights
- Volunteer
- Portable restrooms
- Vehicle traffic
- Barricade
- Caution tape/delineator
- Spectator parking
- Water

North arrow and "Not to Scale" text.

MAGIC MOUNTAIN PKWY CLOSED TO TRAFFIC AT TOURNEY RD - RUNNERS CROSSING - EXPECT DELAYS 7:00 AM - 7:30 AM

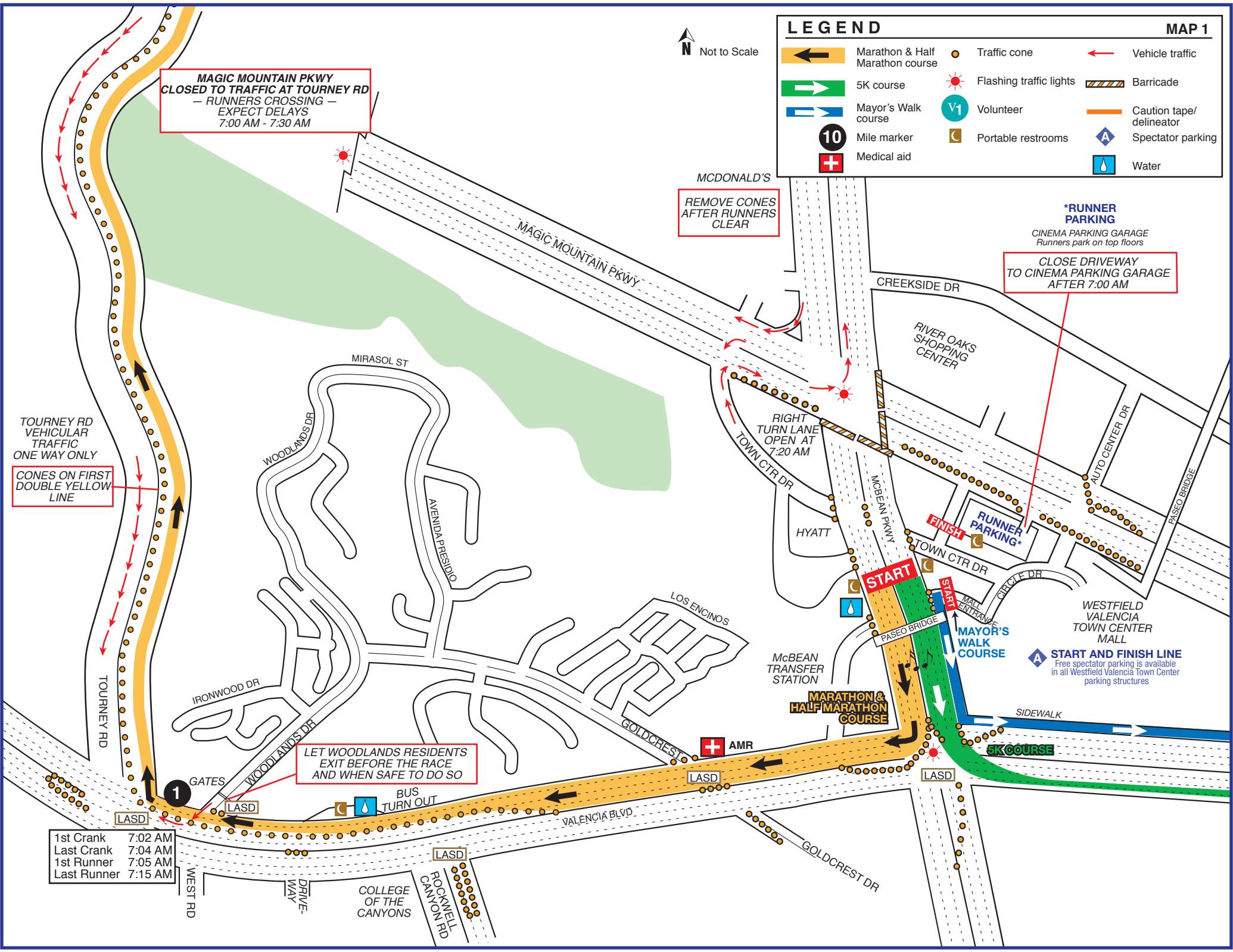
MCDONALD'S REMOVE CONES AFTER RUNNERS CLEAR

*RUNNER PARKING CLOSE DRIVEWAY TO CINEMA PARKING GARAGE AFTER 7:00 AM

TOURNEY RD VEHICULAR TRAFFIC ONE WAY ONLY CONES ON FIRST DOUBLE YELLOW LINE

LET WOODLANDS RESIDENTS EXIT BEFORE THE RACE AND WHEN SAFE TO DO SO

1st Crank 7:02 AM Last Crank 7:04 AM 1st Runner 7:05 AM Last Runner 7:15 AM



LASD

LASD

LASD

LASD

LASD

LASD

LASD

LASD

LASD

LASD

LASD

LASD

LASD

LASD

LASD

LASD

LASD

LASD

LASD

LASD

LASD

LASD

LASD

LASD

LASD

LASD

LASD

LASD

LASD

LASD

LASD

LASD

LASD

LASD

LASD

LASD

LASD

LASD

LASD

LASD

LASD

LASD

LASD

LASD

LASD

LASD

LASD

LASD

LASD

LASD

LASD

LASD

LASD

LASD

LASD

LASD

LASD

LASD

LASD

LASD

LASD

LASD

LASD

LASD

LASD

LASD

LASD

LASD

LASD

LASD

LASD

LASD

LASD

LASD

LASD

LASD

LASD

LASD

LASD

LASD

LASD

LASD

LASD

LASD

LASD

LASD

LASD

LASD

LASD

LASD

LASD

LASD

LASD

LASD

LASD

LASD

LASD

LASD

LASD

LASD

LASD

LASD

LASD

LASD

LASD

LASD

LASD

LASD

LASD

LASD

LASD

LASD

LASD

LASD

LASD

LASD

LASD

LASD

LASD

LASD

LASD

LASD

LASD

LASD

LASD

LASD

LASD

LASD

LASD

LASD

LASD

LASD

LASD

LASD

LASD

LASD

LASD

LASD

LASD

LASD

LASD

LASD

LASD

LASD

LASD

LASD

LASD

LASD

LASD

LASD

LASD

LASD

LASD

LASD

LASD

LASD

LASD

LASD

LASD

LASD

LASD

LASD

LASD

LASD

LASD

LASD

LASD

LASD

LASD

LASD

LASD

LASD

LASD

LASD

LASD

LASD

LASD

LASD

LASD

LASD

LASD

LASD

LASD

LASD

LASD

LASD

LASD

LASD

LASD

LASD

LASD

LASD

LASD

LASD

LASD

LASD

LASD

LASD

LASD

LASD

LASD

LASD

LASD

LASD

LASD

LASD

LASD

LASD

LASD

LASD

LASD

LASD

LASD

LASD

LASD

LASD

LASD

LASD

LASD

LASD

LASD

LASD

LASD

LASD

LASD

LASD

LASD

LASD

LASD

LASD

LASD

LASD

LASD

LASD

LASD

LASD

LASD

LASD

LASD

LASD

LASD

LASD

LASD

LASD

LASD

LASD

LASD

LASD

LASD

LASD

LASD

LASD

LASD

LASD

LASD

LASD

LASD

LASD

LASD

LASD

LASD

LASD

LASD

LASD

LASD

LASD

LASD

LASD

LASD

LASD

LASD

LASD

LASD

LASD

LASD

LASD

LASD

LASD

LASD

LASD

LASD

LASD

LASD

LASD

LASD

LASD

LASD

LASD

LASD

LASD

LASD

LASD

LASD

LASD

LASD

LASD

LASD

LASD

LASD

LASD

LASD

LASD

LASD

LASD

LASD

LASD

LASD

LASD

LASD

LASD

LASD

LASD

LASD

LASD

LASD

LASD

LASD

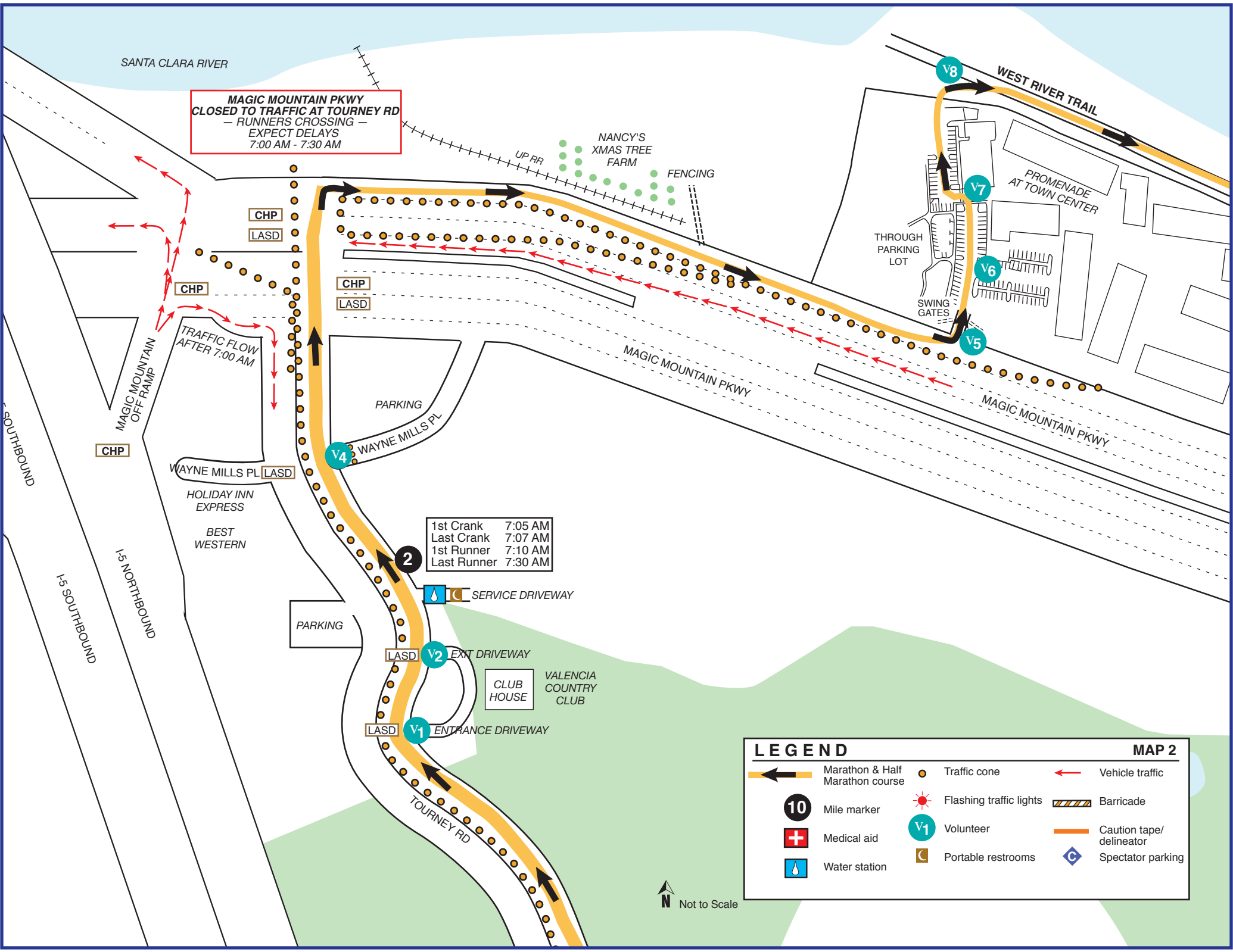
LASD

LASD

LASD

LASD

LASD



**MAGIC MOUNTAIN PKWY
CLOSED TO TRAFFIC AT TOURNEY RD**
- RUNNERS CROSSING -
EXPECT DELAYS
7:00 AM - 7:30 AM

1st Crank 7:05 AM
Last Crank 7:07 AM
1st Runner 7:10 AM
Last Runner 7:30 AM

LEGEND **MAP 2**

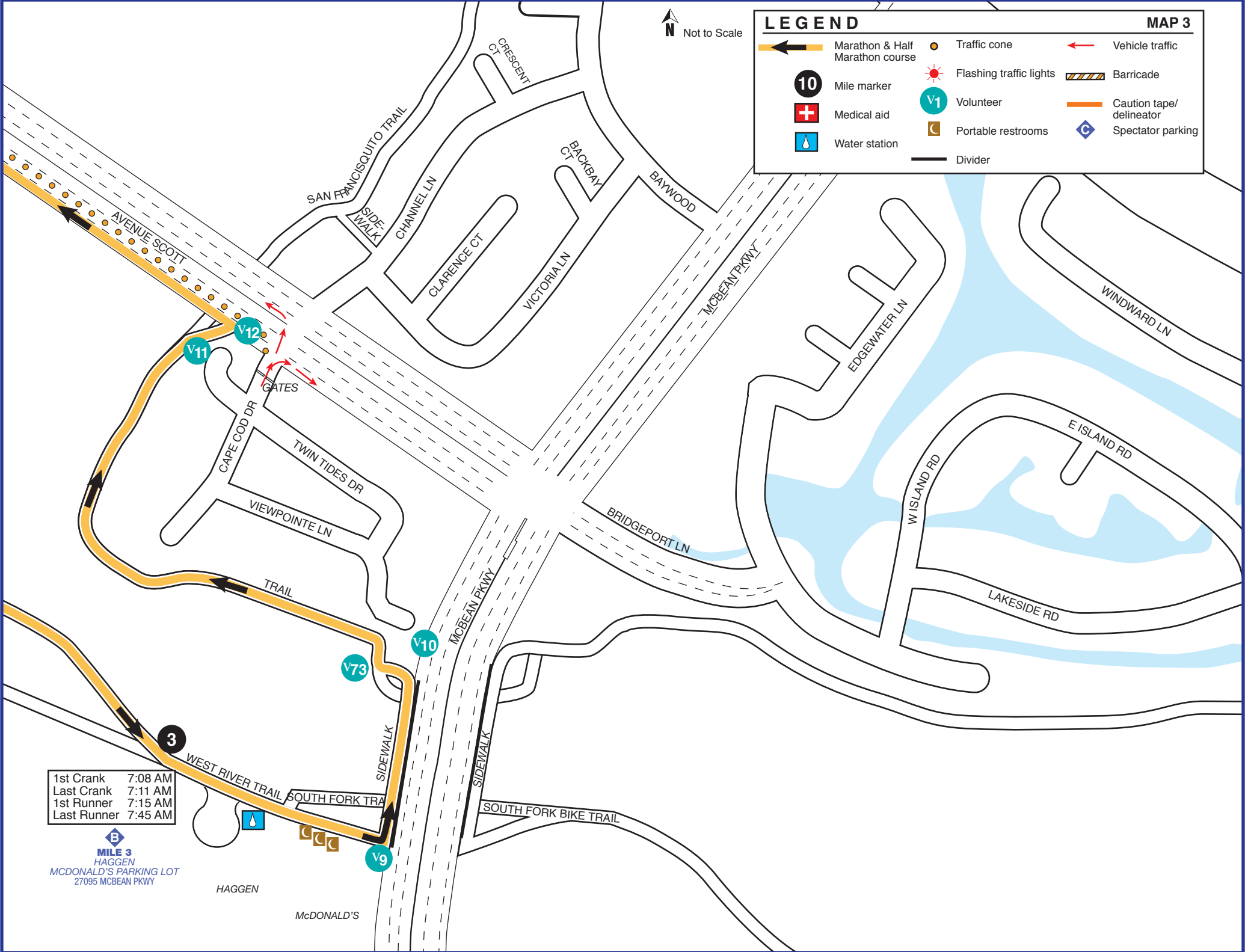
	Marathon & Half Marathon course		Traffic cone		Vehicle traffic
	Mile marker		Flashing traffic lights		Barricade
	Medical aid		Volunteer		Caution tape/delineator
	Water station		Portable restrooms		Spectator parking

Not to Scale

LEGEND

N Not to Scale

- Marathon & Half Marathon course
- Traffic cone
- Vehicle traffic
- Mile marker
- Flashing traffic lights
- Barricade
- Medical aid
- Volunteer
- Caution tape/delineator
- Water station
- Portable restrooms
- Spectator parking
- Divider

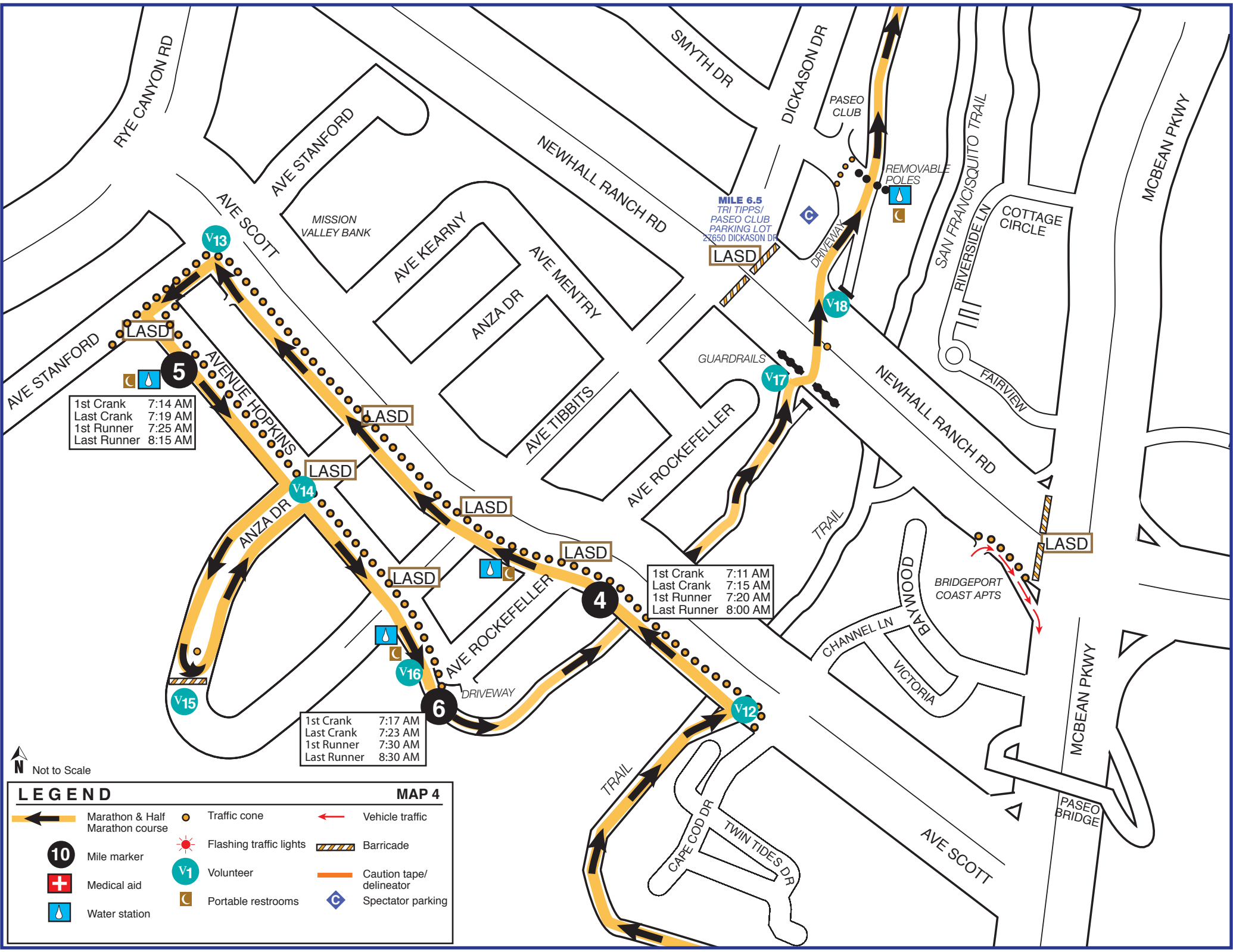


1st Crank 7:08 AM
 Last Crank 7:11 AM
 1st Runner 7:15 AM
 Last Runner 7:45 AM

B
MILE 3
 HAGGEN
 McDONALD'S PARKING LOT
 27095 McBEAN PKWY

HAGGEN

McDONALD'S



1st Crank 7:14 AM
 Last Crank 7:19 AM
 1st Runner 7:25 AM
 Last Runner 8:15 AM

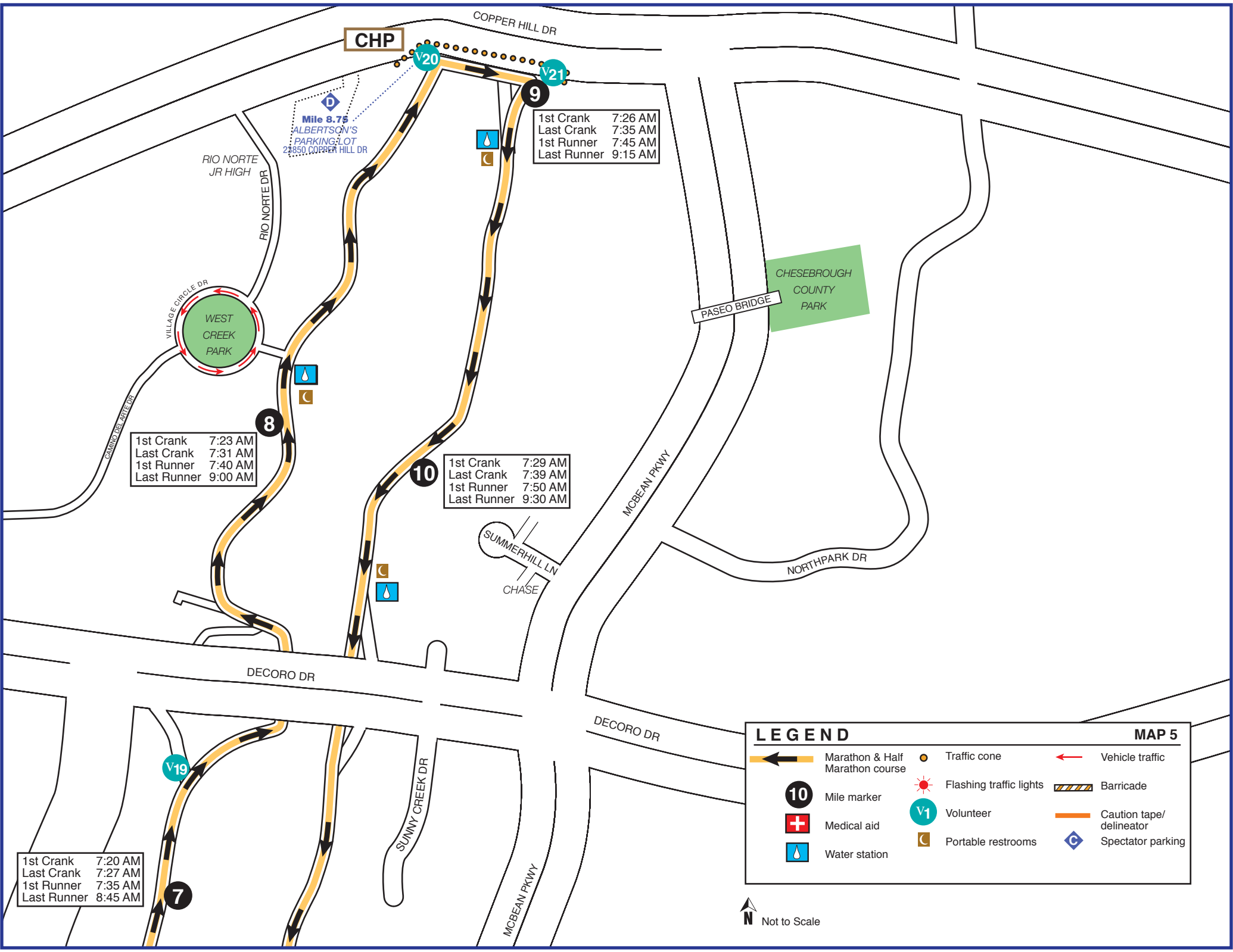
1st Crank 7:11 AM
 Last Crank 7:15 AM
 1st Runner 7:20 AM
 Last Runner 8:00 AM

1st Crank 7:17 AM
 Last Crank 7:23 AM
 1st Runner 7:30 AM
 Last Runner 8:30 AM

N
 Not to Scale

LEGEND **MAP 4**

	Marathon & Half Marathon course		Traffic cone		Vehicle traffic
	Mile marker		Flashing traffic lights		Barricade
	Medical aid		Volunteer		Caution tape/delineator
	Water station		Portable restrooms		Spectator parking



LEGEND **MAP 5**

	Marathon & Half Marathon course		Traffic cone		Vehicle traffic
	Mile marker		Flashing traffic lights		Barricade
	Medical aid		Volunteer		Caution tape/delineator
	Water station		Portable restrooms		Spectator parking

Not to Scale

1st Crank 7:32 AM
 Last Crank 7:43 AM
 1st Runner 7:55 AM
 Last Runner 9:45 AM

MILE 11 *
 HERITAGE PARK
 24155 NEWHALL RANCH RD
 Enter off McBean
 to Fairview *

1st Crank 7:35 AM
 Last Crank 7:47 AM
 1st Runner 8:00 AM
 Last Runner 10:00 AM

HALF MARATHON:
 to FINISH
 KEEP TO RIGHT SIDE

MARATHON
 1st TIME
 KEEP TO LEFT SIDE

AVE TIBBITTS

SAN FRANCISQUITO TRAIL
 SIDEWALK
 CHANNEL LN

AVENUE SCOTT

CAPE COD DR
 TWIN TIDES DR
 VIEWPOINTE LN

WEST RIVER TRAIL

NEWHALL RANCH RD

BRIDGEPORT COVE APTS

PANERA BREAD

MCBEAN PKWY

BRIDGEPORT LN

SOUTH FORK BIKE TRAIL

FAIRVIEW DR

GRANDVIEW DR

SPRINGHURST PKWY

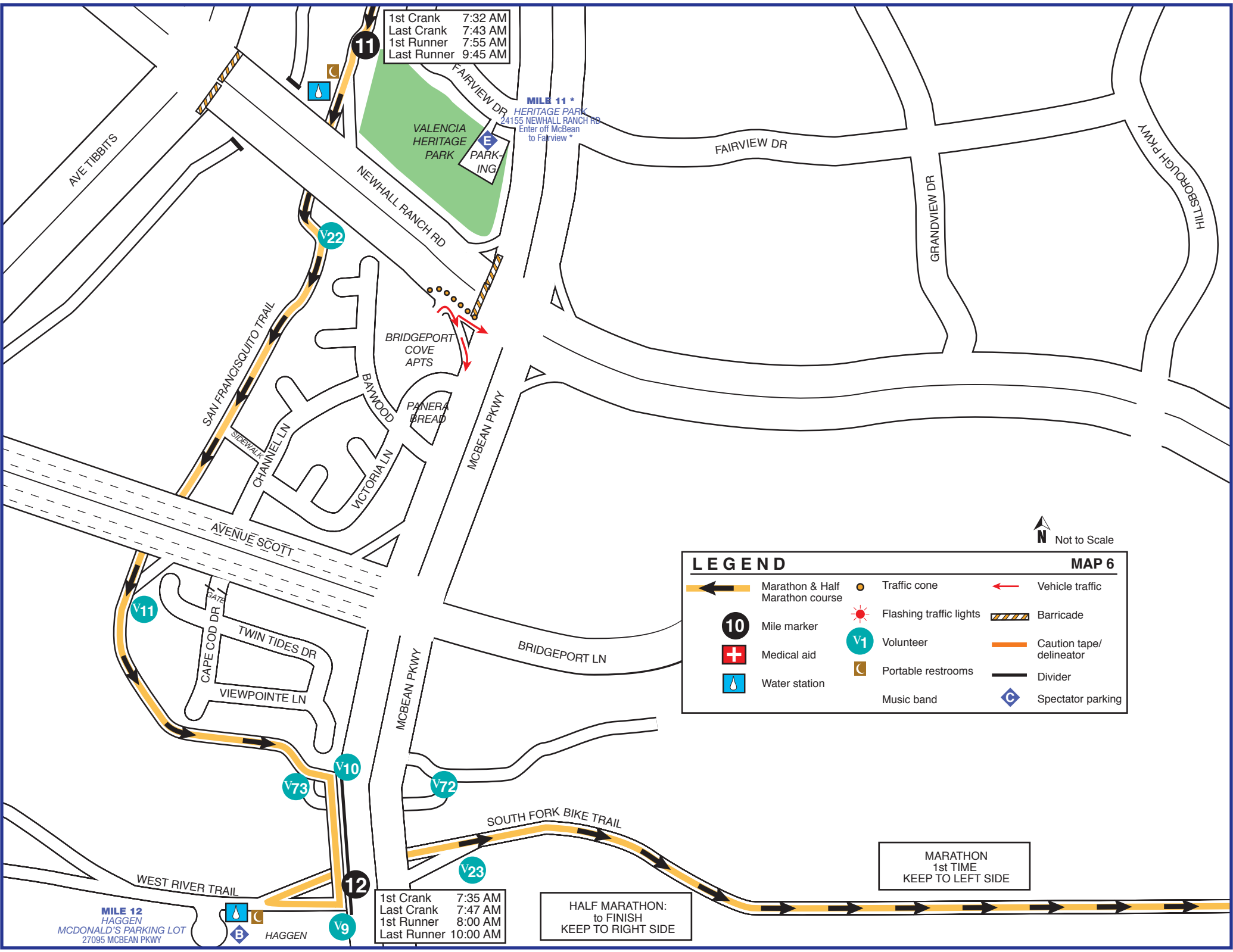
MILE 12
 HAGGEN
 MCDONALD'S PARKING LOT
 27095 MCBEAN PKWY

HAGGEN

N Not to Scale

LEGEND **MAP 6**

	Marathon & Half Marathon course		Traffic cone		Vehicle traffic
	Mile marker		Flashing traffic lights		Barricade
	Medical aid		Volunteer		Caution tape/delineator
	Water station		Portable restrooms		Divider
			Music band		Spectator parking



LEGEND

	Full Marathon		Water station		Sheriff
	Half Marathon		Traffic cone		Vehicle traffic
	Mile marker		Portable restroom		Barricade
	Medical aid		Volunteer		Caution tape/delineator
	Spectator parking		Paseo bridge		

N
Not to Scale

1st Crank 7:35 AM
Last Crank 7:47 AM
1st Runner 8:00 AM
Last Runner 10:00 AM

1st Crank 7:38 AM
Last Crank 7:51 AM
1st Runner 8:05 AM
Last Runner 10:15 AM

HALF MARATHON:
to FINISH
KEEP TO RIGHT SIDE

FULL MARATHON:
1st TIME
KEEP TO LEFT SIDE

FINISH

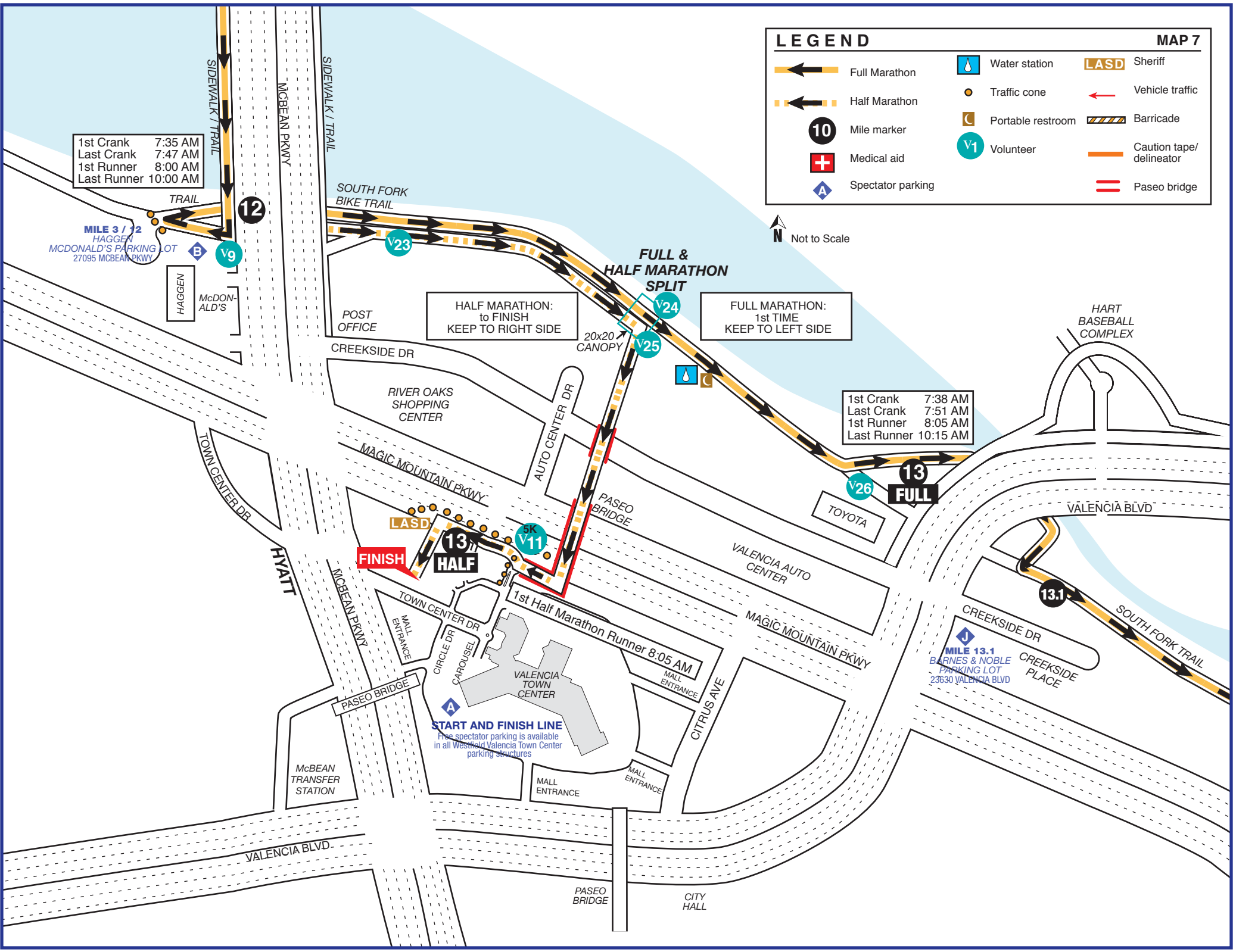
13 HALF

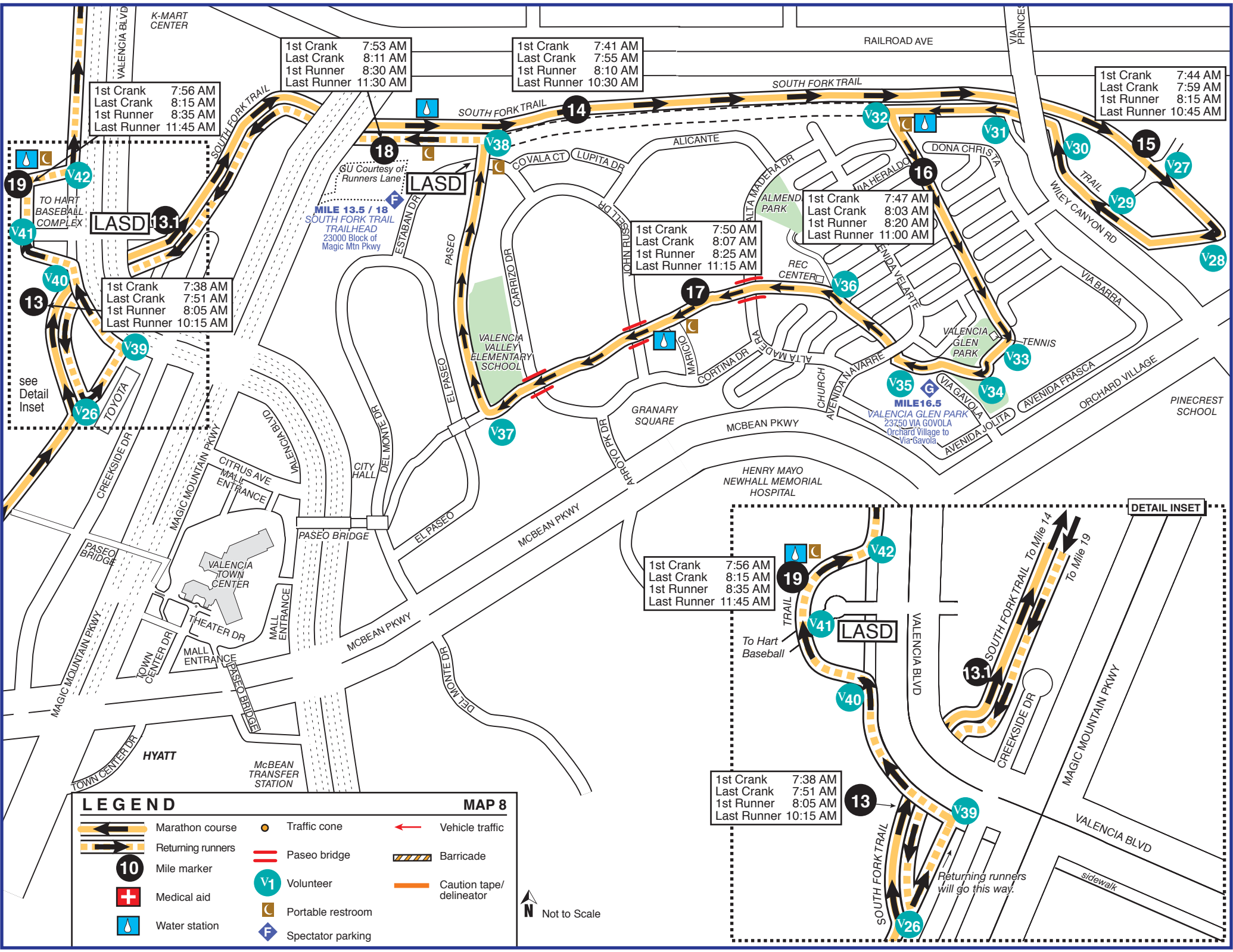
13 FULL

START AND FINISH LINE
Free spectator parking is available
in all Westside Valencia Town Center
parking structures

1st Half Marathon Runner 8:05 AM

MILE 13.1
BARNES & NOBLE
PARKING LOT
23630 VALENCIA BLVD





1st Crank 7:53 AM
 Last Crank 8:11 AM
 1st Runner 8:30 AM
 Last Runner 11:30 AM

1st Crank 7:41 AM
 Last Crank 7:55 AM
 1st Runner 8:10 AM
 Last Runner 10:30 AM

1st Crank 7:56 AM
 Last Crank 8:15 AM
 1st Runner 8:35 AM
 Last Runner 11:45 AM

1st Crank 7:44 AM
 Last Crank 7:59 AM
 1st Runner 8:15 AM
 Last Runner 10:45 AM

1st Crank 7:47 AM
 Last Crank 8:03 AM
 1st Runner 8:20 AM
 Last Runner 11:00 AM

1st Crank 7:50 AM
 Last Crank 8:07 AM
 1st Runner 8:25 AM
 Last Runner 11:15 AM

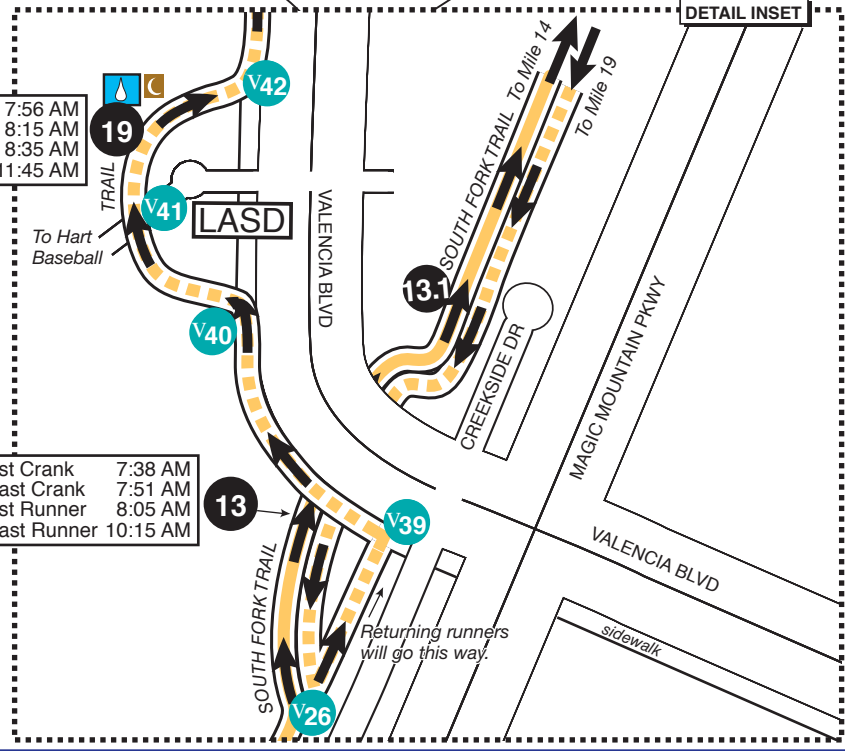
1st Crank 7:38 AM
 Last Crank 7:51 AM
 1st Runner 8:05 AM
 Last Runner 10:15 AM

1st Crank 7:56 AM
 Last Crank 8:15 AM
 1st Runner 8:35 AM
 Last Runner 11:45 AM

1st Crank 7:38 AM
 Last Crank 7:51 AM
 1st Runner 8:05 AM
 Last Runner 10:15 AM

LEGEND **MAP 8**

North Arrow
 Not to Scale



DETAIL INSET

24
 1st Crank 8:11 AM
 Last Crank 8:35 AM
 1st Runner 9:00 AM
 Last Runner 1:00 AM

23
 1st Crank 8:08 AM
 Last Crank 8:31 AM
 1st Runner 8:55 AM
 Last Runner 12:45 AM

21
 1st Crank 8:02 AM
 Last Crank 8:23 AM
 1st Runner 8:45 AM
 Last Runner 12:15 AM

20
 1st Crank 7:59 AM
 Last Crank 8:19 AM
 1st Runner 8:40 AM
 Last Runner 12:00 AM

22
 1st Crank 8:05 AM
 Last Crank 8:27 AM
 1st Runner 8:50 AM
 Last Runner 12:30 AM

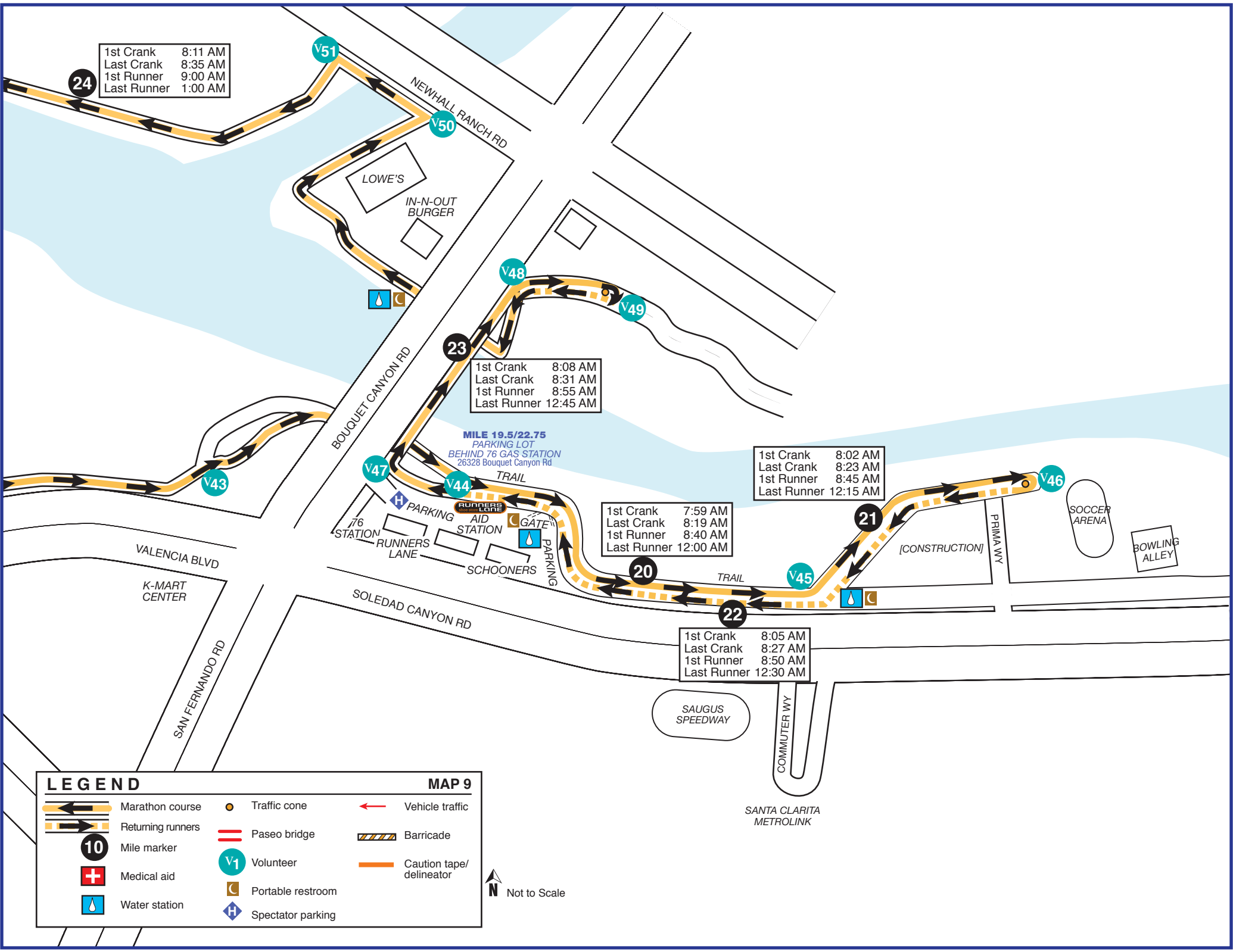
MILE 19.5/22.75
 PARKING LOT
 BEHIND 76 GAS STATION
 26328 Bouquet Canyon Rd

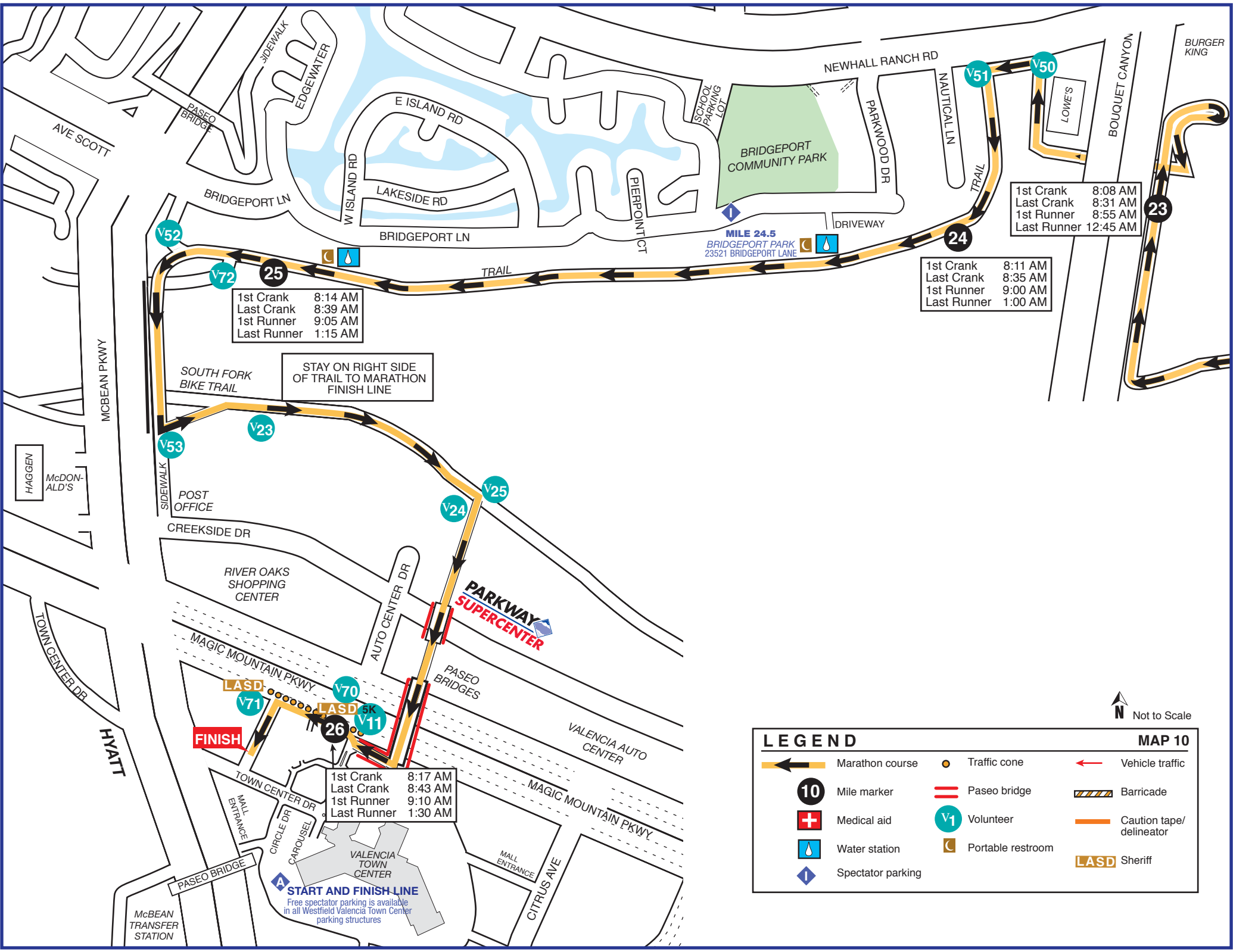
LEGEND

MAP 9

- | | | | | | |
|--|-------------------|--|-------------------|--|-------------------------|
| | Marathon course | | Traffic cone | | Vehicle traffic |
| | Returning runners | | Paseo bridge | | Barricade |
| | Mile marker | | Volunteer | | Caution tape/delineator |
| | Medical aid | | Portable restroom | | |
| | Water station | | Spectator parking | | |

Not to Scale





1st Crank 8:14 AM
 Last Crank 8:39 AM
 1st Runner 9:05 AM
 Last Runner 1:15 AM

1st Crank 8:11 AM
 Last Crank 8:35 AM
 1st Runner 9:00 AM
 Last Runner 1:00 AM

1st Crank 8:08 AM
 Last Crank 8:31 AM
 1st Runner 8:55 AM
 Last Runner 12:45 AM

STAY ON RIGHT SIDE
 OF TRAIL TO MARATHON
 FINISH LINE

1st Crank 8:17 AM
 Last Crank 8:43 AM
 1st Runner 9:10 AM
 Last Runner 1:30 AM

START AND FINISH LINE
 Free spectator parking is available
 in all Westfield Valencia Town Center
 parking structures

LEGEND **MAP 10**

	Marathon course		Traffic cone		Vehicle traffic
	Mile marker		Paseo bridge		Barricade
	Medical aid		Volunteer		Caution tape/delineator
	Water station		Portable restroom		LASD Sheriff
	Spectator parking				

North Arrow
 Not to Scale